

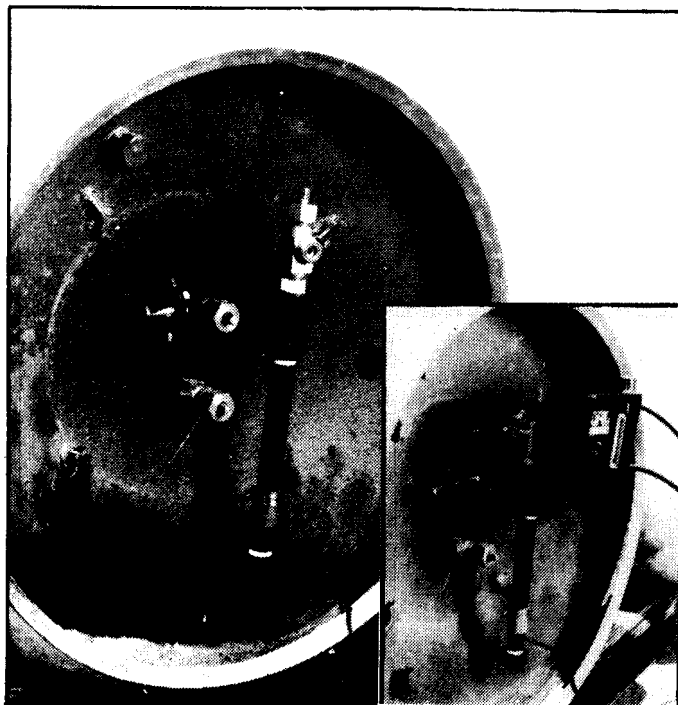
chlorinators incorporated

Stuart, Florida

REGAL DIRECT CHLORINE TON CONTAINER ADAPTOR (FOR DIRECT GAS CHLORINATOR MOUNTING) TAY-200

The REGAL TAY-200 Chlorine Ton Container Adaptor is specially designed to allow the REGAL Direct Cylinder Mounted Gas Chlorinator to be mounted directly onto the gas outlet valve of a U.S. Standard one (1) ton chlorine container. The TAY-200 may also be used in conjunction with other direct cylinder mounted gas chlorinators that are designed to be mounted on the valve of the U.S. Standard 100 or 150 pound chlorine gas cylinder.

Direct ton container mounting poses several problems not usually encountered with direct cylinder mounted gas chlorinators such as, liquid chlorine entering the gas system when first using a new ton container, and excessive amounts of impurities building up in the chlorinator inlet areas. The REGAL TAY-200 adaptor eliminates those problems and gives the gas chlorine user the advantage of lower chlorine gas costs associated with ton containers, while eliminating the use of pressurized flexible connectors and wall mountings.



FEATURES

UNIVERSAL CHLORINATOR MOUNTING VALVE - Each TAY-200 adaptor is provided with a U.S. Standard Chlorine Institute approved cylinder valve, which allows the use of virtually any direct cylinder mounted gas chlorinator. This unique feature enables the

TAY-200 to utilize the existing mounting yoke of any new or previously in-service direct cylinder mounted gas chlorinator with chlorine ton containers, without the use of pressurized flexible connectors and wall mounting accessories or manifolds.

EASIER TON CONTAINER LOCATION — By mounting the gas chlorinator directly onto the ton container gas valve, and utilizing safe, flexible vacuum tubing to connect the chlorinator to its ejector, the REGAL TAY-200 provides the user with greater flexibility in choosing the ton container location. It is not necessary to place the container near a wall, or to worry about the length of flexible connectors, etc.

CAPACITIES

The REGAL TAY-200 Chlorine Ton Container Adaptor is capable of handling chlorine feed rates of up to 500 pounds per day (10 kg/hr). The actual maximum continuous rate of withdrawal of chlorine gas from a ton container using the TAY-200 adaptor and direct-mounted chlorinator will depend on the existing ambient temperature at the ton container location. For example, the minimum ambient temperature necessary to continuously withdraw 500 ppd (10 kg/hr) of chlorine gas is approximately 40° F (4° C). For temperatures exceeding 100° F (38° C) the ton container and chlorinator/adaptor should be shaded from direct sunlight.

INSTALLATION AND MOUNTING

The chlorinator is mounted onto the TAY-200 adaptor valve using its own cylinder mounting yoke and a lead sealing gasket. This then becomes an integral assembly for direct ton container mounting, and it is not necessary to remove the chlorinator from the TAY-200 adaptor unless servicing is required on the chlorinator. The TAY-200 adaptor has a high strength yoke-clamp with integral tightening handle, which fits directly over the upper valve (chlorine gas outlet valve) of a ton container. The adaptor inlet is designed to align correctly with the container valve outlet, and a lead gasket is used to seal this connection. A liquid trap with external heater is located below the inlet to contain and evaporate the small amount of liquid chlorine which may come out of the container when the valve is first opened.

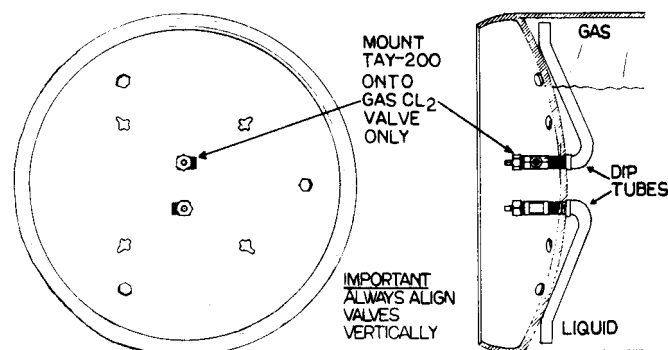
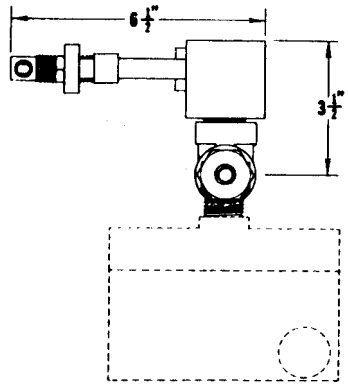
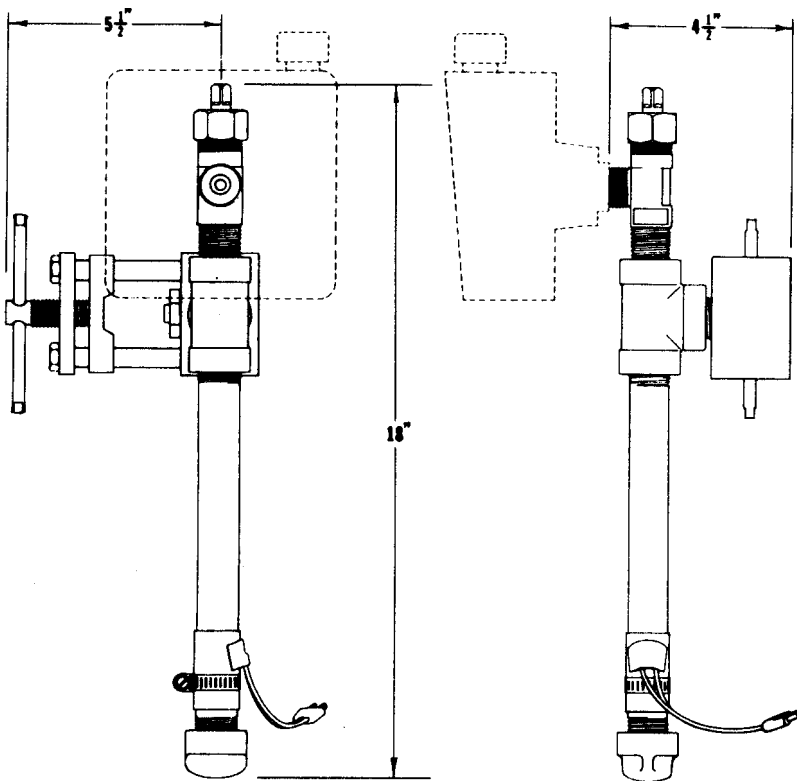


Figure No. 1



**REGAL TAY-200
DIRECT CHLORINE TON
CONTAINER ADAPTOR**



SPECIFICATIONS

The gas chlorine ton container adaptor shall be the REGAL TAY-200 direct chlorine ton container adapter manufactured by Chlorinators Incorporated, Stuart, Florida.

It shall be designed to mount directly onto the ton container gas outlet valve by means of a positive yoke type clamp having an integral tightening screw with slide bar handle. The adaptor shall contain an auxiliary chlorine valve which shall permit the mounting of a standard direct cylinder mounded gas chlorinator

The adaptor shall contain a liquid trap to collect dirt or liquid which may enter the chlorination system when the container valve is first opened.

A 25 watt heater shall be mounted externally on the liquid trap to vaporize the liquid which may enter the adaptor.

Chlorinators Incorporated

1044 S.E. Dixie Cutoff Road, Stuart, Florida 34994-3436
772-288-4854 FAX 772-287-3238